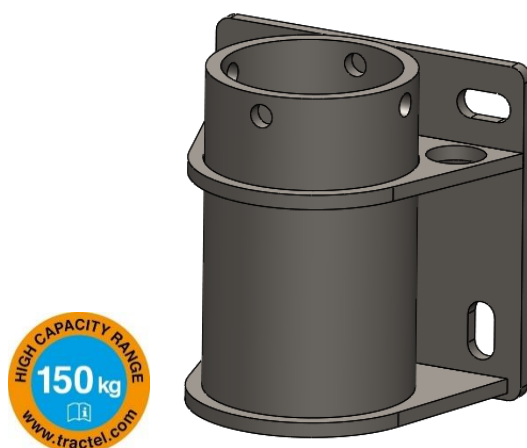


## APPLICATIONS

The davitrac or davimast wall mounted adapter is exclusively designed to be installed with the davitrac or davimast manufactured by Tractel®. This adapter allows the davitrac or davimast to be installed on a high point access to a vertical surface. It is equipped with 2 PPE anchoring points of 150kg each which can be used by 2 operators to secure themselves when installing the davitrac or davimast.



## DESCRIPTION

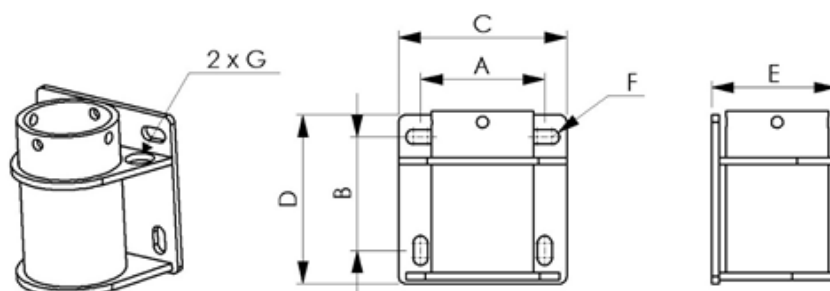
The davitrac / davimast wall mounted adapter is fixed to the floor with 4 heavy duty chemical anchors with a diameter of 16mm.

It can be installed without any specific tools and is quick and easy to install.

It allows the davitrac or davimast to rotate 360° in relation to its axis.

## TECHNICAL CHARACTERISTICS

- ✘ Material: galvanised steel
- ✘ Net weight: 13.5kg
- ✘ A: 170mm
- ✘ B: 155mm
- ✘ C: 230mm
- ✘ D: 230mm
- ✘ E: 171mm
- ✘ F: 20mm



## APPLICABLE STANDARDS

- ✘ EN795-A:2012: Fall arrest anchor point,
- ✘ TS16415: Multiuser of 150 kg
- ✘ 2006/42/CE: Anchor lifting point in accordance with the machine directive (WLL 500kg)

## MAIN COMPONENTS

Code	Description	EAN Code	Weight (incl. packaging)	Packaging size
210118	Wall mounted adapter davimast / davitrac	3600232101185	13.7 kg	230x230x171 mm